

PLOT 1 - PEAR TREE BARN



Typical interior

PEAR TREE BARN

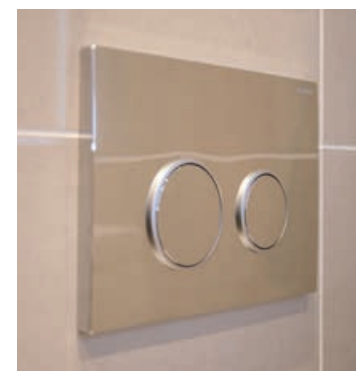
PLOT 1 - PEAR TREE BARN

CHARACTER BARN CONVERSION WITH 3 DOUBLE BEDROOMS AND 3 EN-SUITES

Character-filled barn conversion set over three floors to provide a really spacious, light-filled home. Beautifully designed, you will be amazed at the amount of interior space compared to most new homes with even the smallest bedroom being a double. Spend your days in the open-plan, fully-

equipped, kitchen/living/dining space - an impressive 24 feet long, perfect for relaxing at the breakfast bar or entertaining friends. An adjacent utility room provides extra storage and ensures those noisy appliances don't disturb you. Double doors open onto the garden to make the most of those sunny days.

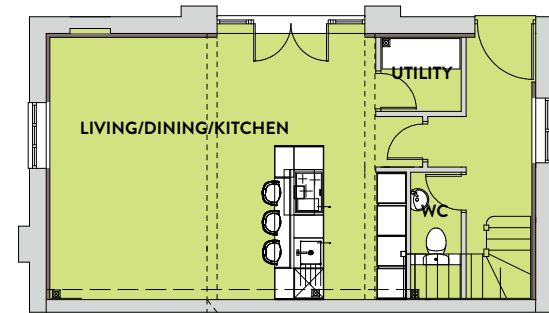
The first floor could be your own Master suite with extensive bedroom, en-suite bathroom and adjacent study or dressing room. On the second floor are two further double bedrooms, both with en-suite shower rooms. Outside there's a paved garden and two private parking spaces.



Typical interiors

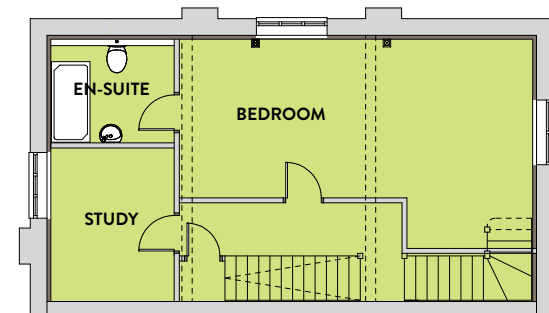
GROUND FLOOR

LIVING/DINING/KITCHEN	7.48m x 5.30m	24' 6" x 17' 4"
UTILITY	1.87m x 1.65m	6' 0" x 5' 4"
HALL	3.80m x 1.70m max	12' 5" x 5' 6"
WC	2.24m x 1.20m max	8' 0" x 4' 0"



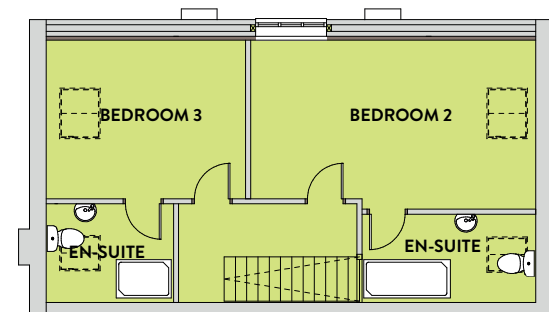
FIRST FLOOR

BEDROOM 1	6.81m x 3.99m max	22' 4" x 13' 1"
EN-SUITE	2.73m x 1.98m max	9' 0" x 6' 6"
STUDY	3.15m x 2.79m	10' 4" x 9' 2"



SECOND FLOOR

BEDROOM 2	5.68m x 3.47m max	18' 8" x 11' 5"
EN-SUITE	3.61m x 1.73m	11' 10" x 5' 8"
BEDROOM 3	3.90m x 3.26m	12' 10" x 10' 8"
EN-SUITE	1.92m x 1.60m	6' 6" x 6' 0"



Please note that the information provided on this property is for illustrative purposes only and does not form part of any contract. Designs and CGIs may not be to scale and layouts and fittings may subsequently change. All dimensions are approximate and should not be relied upon when ordering carpets, furniture or fittings.