

PLOT 4 - PEAR TREE BARN



Typical interior

PEAR TREE BARNS

PLOT 4 - PEAR TREE BARNS

SPACIOUS END MEWS WITH 3 DOUBLE BEDROOMS AND 3 EN-SUITES

A spacious, three-storey end property with three double en-suite bedrooms and open plan living/kitchen/diner in the heart of the Cheshire countryside. The solid oak front door opens into the hallway with doors leading to the utility room, wc and living space. Beautiful washed oak hardwood feature floors lead you

through the downstairs spaces adding more warmth and character. The fully-equipped bespoke kitchen houses contemporary appliances, quartz worktops and that all-important breakfast bar – a magnetic hub when entertaining family and friends. There's plenty of space for them as well, with two double en-suite

bedrooms on the second floor whilst the extravagant Master Suite has a whole floor to itself. Outside there's a private garden and terrace and two dedicated parking spaces.

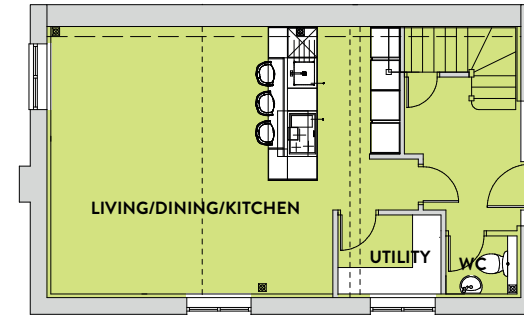


Typical interiors



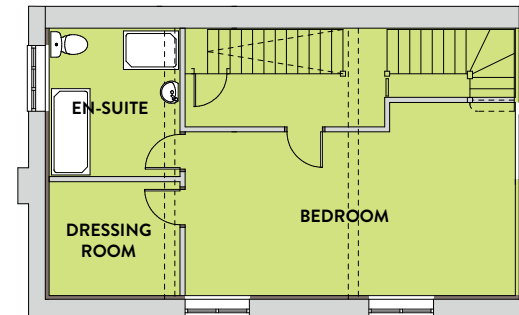
GROUND FLOOR

LIVING/DINING/KITCHEN	7.46m x 5.12m	24' 6" x 16' 10"
UTILITY	2.24m x 1.18m	7' 3" x 3' 9"
HALL	2.96m x 2.56m	9' 8" x 8' 4"
WC	1.36m x 1.04m	4' 8" x 4' 0"



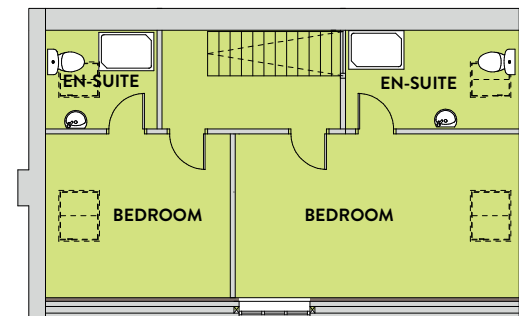
FIRST FLOOR

BEDROOM 1	6.86m x 3.66m	22' 6" x 12' 0"
EN-SUITE	2.84m x 2.17m	9' 4" x 7' 1"
DRESSING ROOM	2.29m x 1.86m	7' 6" x 6' 1"



SECOND FLOOR

BEDROOM 2	5.53m x 3.14m	18' 2" x 10' 4"
EN-SUITE	3.17m x 1.95m	10' 5" x 6' 5"
BEDROOM 3	3.74m x 3.14m	12' 3" x 10' 4"
EN-SUITE	1.84m x 1.76m	6' 4" x 5' 6"



Please note that the information provided on this property is for illustrative purposes only and does not form part of any contract. Designs and CGIs may not be to scale and layouts and fittings may subsequently change. All dimensions are approximate and should not be relied upon when ordering carpets, furniture or fittings.