

PLOT 6 - PEAR TREE BARN



Typical interior

PEAR TREE BARNS

PLOT 6 - PEAR TREE BARNS

CHARACTER CORNER MEWS WITH 2 DOUBLE EN-SUITE BEDROOMS

A two-storey corner mews property full of light and space with large kitchen/living/dining space, separate study, utility room and cloakroom. Step through your front door into the hallway onto a beautiful oak hardwood floor - a visual feast for the eyes. Just off the hallway are doors leading into the study/snug,

utility room, downstairs cloakroom and into the open-plan living/kitchen/dining space. The fully-equipped bespoke kitchen has a quartz-topped central island and all the appliances you need to cook up a culinary storm. On the first floor is Master bedroom with en-suite bathroom and adjacent wardrobe space

in the eaves which you can customise with hanging rails, shelves and drawers. And there's another double bedroom with en-suite shower room. This home has its own private parking spaces and landscaped garden and terrace at the rear.

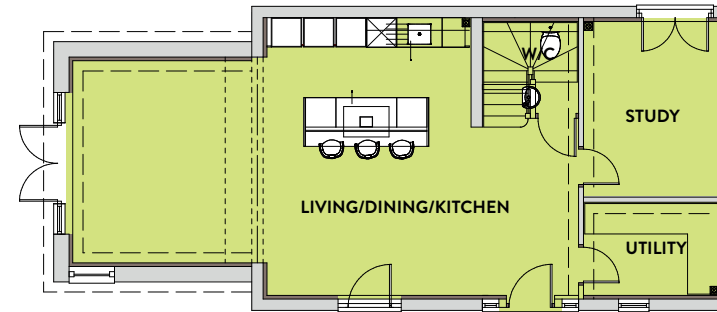


Typical interiors



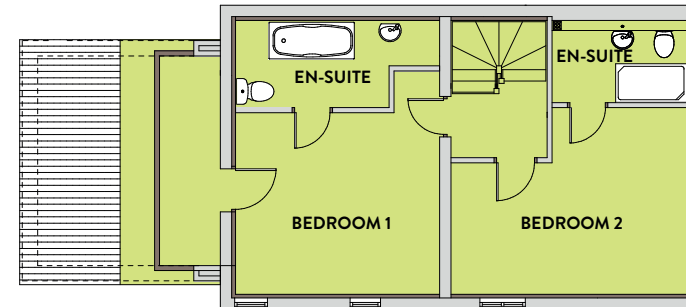
GROUND FLOOR

LIVING/DINING/KITCHEN	7.50m x 5.30m max	24' 7" x 17' 4"
UTILITY	2.00m x 1.70m	8' 1" x 5' 6"
STUDY	3.30m x 2.00m	10' 10" x 6' 7"
HALL	3.30m x 1.00m	10' 10" x 3' 3"
WC	1.20m x 0.90m	6' 0" x 3' 3"



FIRST FLOOR

BEDROOM 1	3.90m x 3.50m	12' 10" x 11' 6"
EN-SUITE	3.30m x 1.60m	11' 11" x 5' 10"
BEDROOM 2	4.50m x 3.50m max	14' 9" x 11' 6"
EN-SUITE	2.50m x 1.30m	7' 1" x 6' 2"



Please note that the information provided on this property is for illustrative purposes only and does not form part of any contract. Designs and CGIs may not be to scale and layouts and fittings may subsequently change. All dimensions are approximate and should not be relied upon when ordering carpets, furniture or fittings.