

PLOT 7 - PEAR TREE BARNES



Typical interior

PEAR TREE BARNES

PLOT 7 - PEAR TREE BARNES

LARGE CHARACTER END MEWS WITH 2 DOUBLE EN-SUITE BEDROOMS

A two-storey end mews, beautifully designed, with large light-filled spaces. The largest kitchen/living/dining space of all the homes here is an impressive 426 square feet with bifold doors extending out to the garden. Stunning oak floors and bespoke fully-equipped kitchen make this the space you want to

be whether it's having a coffee and reading a paper at the breakfast bar or entertaining friends and family. Upstairs the Master bedroom with en-suite shower room has a large adjacent robe space which you can customise with hanging rails, shelves and drawers.

There's a second double guest bedroom with en-suite bathroom. This home has its own private parking spaces and landscaped garden and patio.

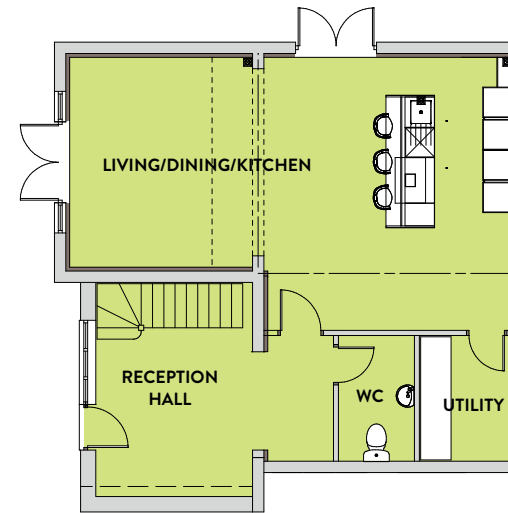


Typical interiors



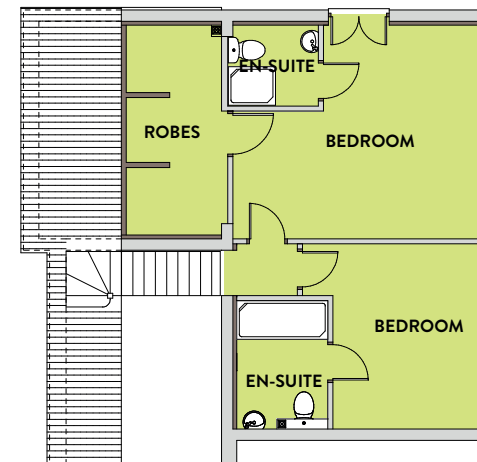
GROUND FLOOR

LIVING/DINING/KITCHEN	8.50m x 4.70m	27' 10" x 15' 5"
RECEPTION HALL	3.20m x 3.00m	10' 6" x 9' 11"
UTILITY	2.40m x 1.70m	7' 3" x 6' 0"
INNER LOBBY	2.30m x 1.20m	7' 6" x 3' 11"
WC	2.30m x 1.30m	6' 7" x 5' 0"



FIRST FLOOR

BEDROOM 1	4.70m x 4.00m max	15' 5" x 13' 1"
EN-SUITE	1.70m x 1.50m	6' 1" x 5' 3"
BEDROOM 2	3.50m x 2.80m	11' 6" x 9' 2"
EN-SUITE	3.30m x 1.60m	7' 3" x 5' 6"



Please note that the information provided on this property is for illustrative purposes only and does not form part of any contract. Designs and CGIs may not be to scale and layouts and fittings may subsequently change. All dimensions are approximate and should not be relied upon when ordering carpets, furniture or fittings.